

O'CALLAGHAN HOTELS

Meeting Rooms & Event Spaces





O'Callaghan Hotels are one of Ireland's leading privately owned hotel groups established since 1990 with four hotels in Dublin. The Davenport Hotel, The Alexander Hotel, The Mont Clare and The Stephen's Green Hotel.

Each hotel is unique in its style and offerings, from traditional, modern contemporary to boutique style and one thing they all have in common is the location. They are perfectly located in downtown Dublin close to some of Dublin's main financial and business districts as well as being in the heart of Dublin's main cultural and shopping attractions. In addition to the hotels in Dublin, the group also owns the Elliott Hotel in Gibraltar, the O'Callaghan Hotel in Annapolis and the Tamburlaine Hotel in Cambridge, which is due to open in spring 2017.

Here at O'Callaghan Hotels, our aim is to ensure that your event is a complete success and in order to accomplish that, we ensure that every last detail is taken care of. We cater for a wide range of events and have a varied array of event spaces available across our portfolio of hotels here in Dublin.

Speak to a member of our events team to find out about holding your event in one of our hotels and allow us to show you why O'Callaghan Hotels really are your best choice when it comes to choosing a Dublin City Centre location.





Alexander Hotel

Contemporary and spacious

This modern and bright hotel is both spacious and welcoming. The hotel has extensive purpose built meeting and conference facilities on site and has hosted many national and international events over the years. Nestled in a quiet corner at Merrion Square in the heart of Dublin city, the Alexander Hotel is a beautifully appointed 4-star luxury hotel offering guests the perfect combination of modern convenience and traditional Irish ambience.

The Alexander Hotel is close to the Georgian Squares and in an ideal location whether you are in Dublin for business or leisure.

Hotel Facilities

- Four star
 - 98 classic bedrooms
 - King size beds
 - 4 suites
 - All bedrooms individually air conditioned
 - Caravaggio's restaurant
 - Winners bar
 - Parking available off site
 - Complimentary Wi-Fi available
 - 24 hour access to our fitness suite,
Available for the use of residents
 - Meeting rooms and function spaces available
for private hire for 10-400 delegates
 - 24 hour room service
-

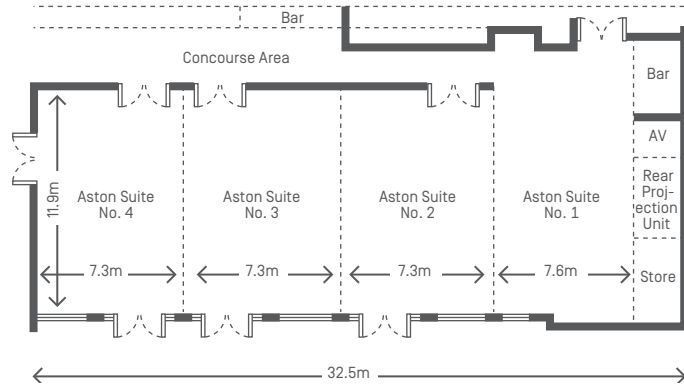


Alexander Aston Suite
Area: 365m² | Capacity: 400

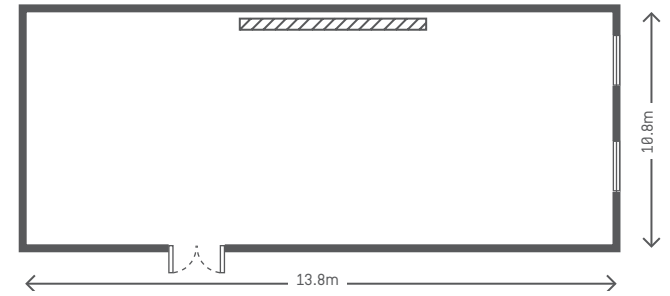


Ascot U-Shaped
Area: 144m² | Capacity: 100

Aston Suite



Ascot Suite



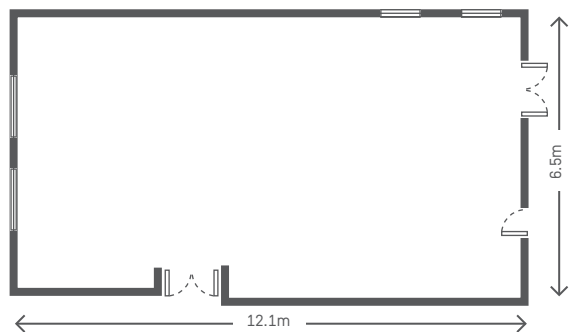
CAPACITIES	ASTON SUITE	SUITE 1	S. 2	S. 3	S. 4	S. 1 & 2	S. 1, 2 & 3	S. 3 & 4
THEATRE	400	90	70	70	70	200	260	140
BOARDROOM	100	45	40	30	40	60	80	60
CLASSROOM	200	50	45	35	45	100	130	40
U SHAPE	100	35	35	30	35	60	80	60
CABARET	200	42	42	35	35	80	128	80
DINNER	380	84	72	72	72	156	240	140
RECEPTION	400	80	60	60	60	200	250	120
AREA	365m ²	106m ²	86m ²	86m ²	86m ²	192m ²	264m ²	173m ²

CAPACITIES	ASCOT
THEATRE	120
BOARDROOM	40
CLASSROOM	50
U SHAPE	35
CABARET	80
DINNER	90
RECEPTION	120
FLOOR AREA	144m ²

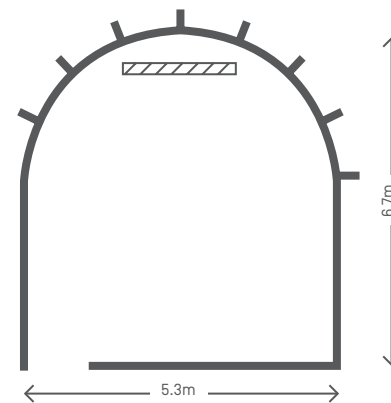


Ascot Theatre Layout
Area: 144m² | Capacity: 120

The Annesley Suite



Rooftop Boardroom



CAPACITIES	ANNESLEY
THEATRE	60
CLASSROOM	35
U-SHAPE	35
CABARET	40
BOARDROOM	40
DINNER	60
RECEPTION	70
FLOOR AREA	78m ²



The Annesley Suite
Area: 78m² | Capacity: 70

CAPACITIES	ROOFTOP
BOARDROOM	10
FLOOR AREA	32m ²



The Rooftop Suite
Area: 78m² | Capacity: 10



Davenport Hotel

Traditional elegance on the corner of Merrion Square The Davenport Hotel is located at the core of Georgian Dublin's famous square. This hotel offers a perfect blend of old meets new and celebrates 20 years looking after Dublin's locals and visitors alike.

The surviving Italianate facade dates back to 1863 and is on the register of historic features of Ireland. This impressive exterior welcomes visitors to the hotel and leads you into the lobby of the hotel.

The neighbouring buildings and layout of the square offer a glimpse of what Dublin used to be and how modern Dublin has settled beautifully into the square, the Davenport Hotel reflects how well old meets new in our city.

Hotel Facilities

- Four star
 - 103 classic bedrooms
 - 12 suites
 - King size beds
 - All bedrooms individually air conditioned
 - Lanyon's restaurant
 - President's bar
 - Parking available off site
 - Complimentary Wi-Fi available
 - 24 hour access to our fitness suite, available for the use of residents
 - Meeting rooms and function spaces available for private hire for 4-200 delegates
-

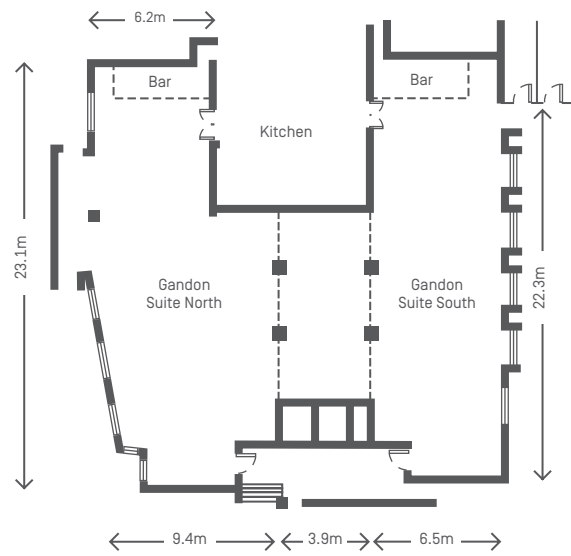


Davenport Lobby

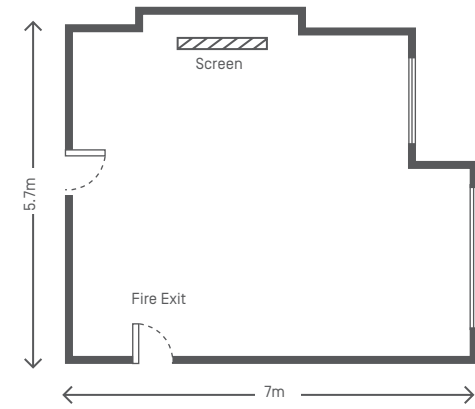


Gandon Suite Wedding
Area: 217m² | Capacity: 200

Gandon Suite



Boardroom



CAPACITIES	GANDON NORTH	GANDON SOUTH	COMBINED
THEATRE	200	180	-
BOARDROOM	70	70	-
CLASSROOM	100	100	-
U SHAPE	80	60	-
CABARET	80	100	-
DINNER	180	120	300
RECEPTION	200	180	400
DIMENSIONS			
AREA	217m ²	143m ²	440m ²

CAPACITIES	
THEATRE	35
BOARDROOM	20
CLASSROOM	16
U SHAPE	16
DINNER	36
RECEPTION	40
DIMENSIONS	
AREA	42m ²



Boardroom
Area: 42m² | Capacity: 36



The Lobby



Oscar's

Trinity Suite
Area: 38m² | Capacity: 18

Mont Clare Hotel

Old world charm in the heart of Dublin

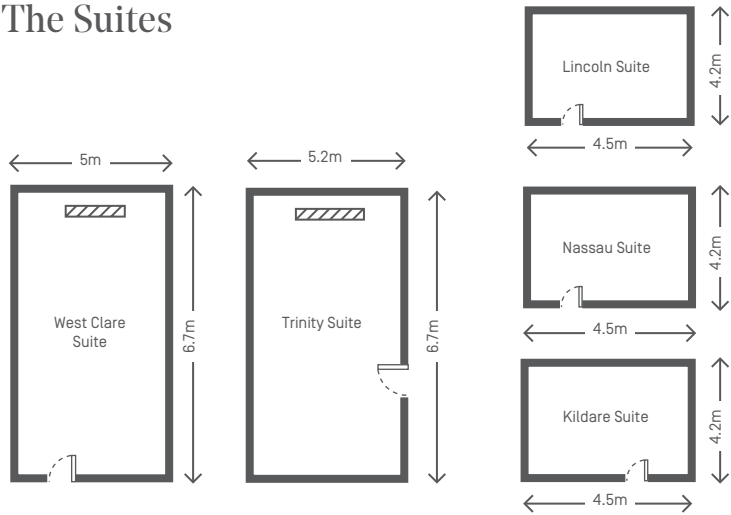
The Mont Clare Hotel is located right in the heart of historical Dublin where Government buildings and Museums intertwine with Georgian Squares, filled with restaurants, businesses and residences that combine to create our city's unique character and bustle.

Guests on business, shoppers and culture seekers have it all on their doorstep in Merrion Square; a popular landmark, the O'Callaghan Mont Clare is located close to Trinity College and Grafton Street. A true home from home experience.

Hotel Facilities

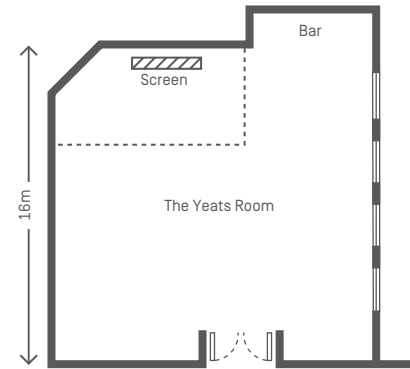
- Three star
 - 66 bedrooms and 8 suites
 - Goldsmiths restaurant
 - Oscar's Bar & Kitchen
 - Parking available off site
 - Complimentary Wi-Fi available
 - Fitness suite available for residents at our sister property across the road from the hotel
 - Meeting rooms and function spaces available for private hire for 10-150 delegates
-

The Suites



CAPACITIES	TRINITY	WEST CLARE	NASSAU	LINCOLN	KILDARE
THEATRE	35	25	12	12	12
BOARDROOM	20	15	10	10	10
CLASSROOM	20	15	6	6	6
U SHAPE	18	16	8	8	8
CABARET	24	18	12	12	12
RECEPTION	35	-	-	-	-
DIMENSIONS					
AREA	38m ²	30m ²	19m ²	19m ²	19m ²

The Yeats Room



CAPACITIES	YEATS
THEATRE	150
BOARDROOM	45
CLASSROOM	60
U SHAPE	40
CABARET	60
DINNER	120
RECEPTION	150
DIMENSIONS	
AREA	117m ²



The Yeats Room – Theatre
Area: 117m² | Capacity: 150



Stephen's Green Hotel

Boutique and stylish

The Stephen's Green Hotel has an enviable location where Harcourt Street and Cuffe Street meet on the corner of St Stephen's Green overlooking the 9 acres of St Stephen's Green Park. The striking glass atrium fills the lobby with natural light and almost brings the beautiful Georgian surroundings into the hotel.

Dublin's best shopping is on the hotels doorstep in Grafton Street, Stephen's Green shopping centre, and Powerscourt Townhouse to name a few. An added benefit for business and shopping alike is that the Luas green line station at St Stephen's Green is across the road from the hotel and will take guests to Sandyford, Dundrum and all stops along that line.

Hotel Facilities

- Four star
 - 89 classic rooms and 10 suites
 - The Magic Glass bar
 - 24 hour access to our fitness suite for the exclusive use of residents
 - Wi-Fi available in all areas
 - Secretarial services
 - 24 hour room service
 - 7 meeting rooms available for private hire—catering for meetings and events from 10–40 delegates
 - The Georgian Library
-

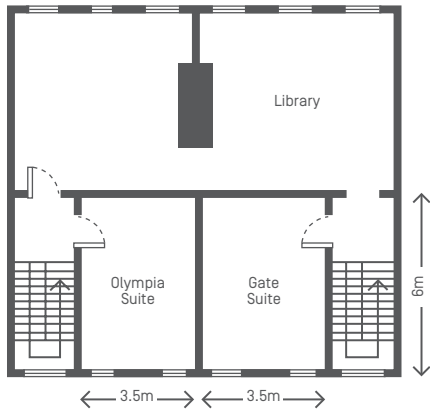


The Library
Area: 35m² | Capacity: 40

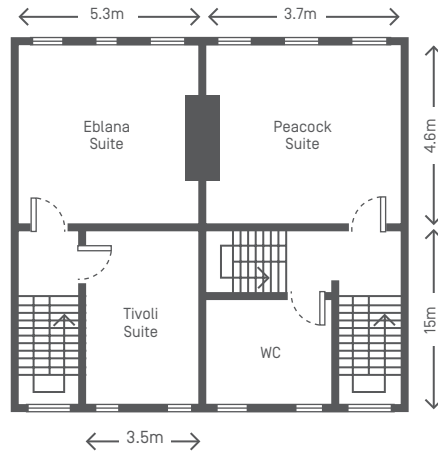


Executive King Suite

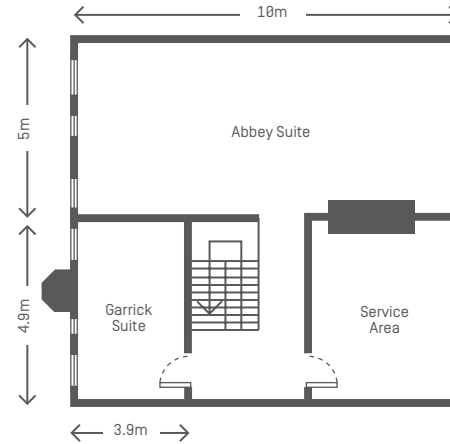
First Floor



Second Floor



Third Floor



Garrick Suite
Area: 18m² | Capacity: 10

CAPACITIES	OLYMPIA	GATE	LIBRARY
BOARDROOM	10	8	-
U SHAPE	9	9	-
RECEPTION	-	-	40
DIMENSIONS			
AREA	20m ²	20m ²	35m ²

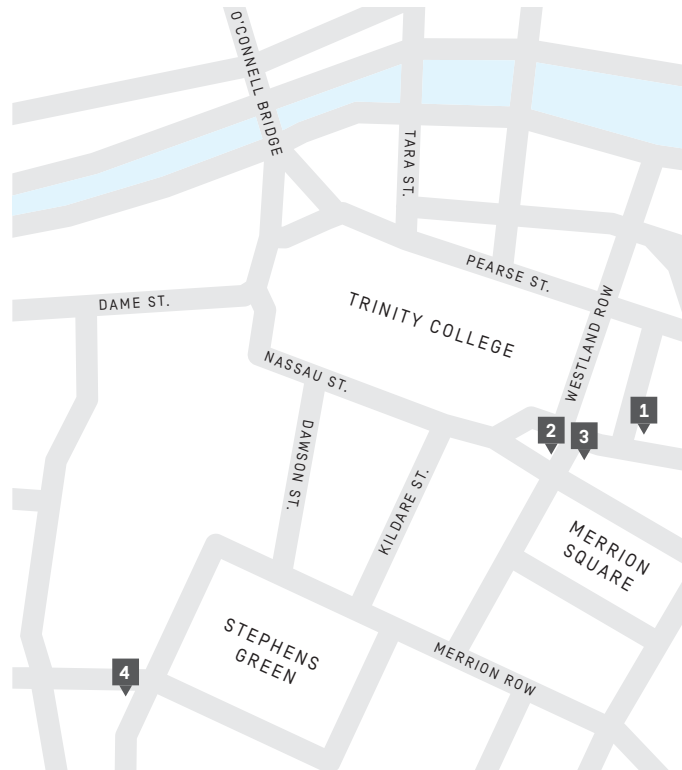
CAPACITIES	EBLANA	PEACOCK	TIVOLI
THEATRE	15	15	15
BOARDROOM	10	10	10
CLASSROOM	8	8	8
U SHAPE	8	8	8
DIMENSIONS			
AREA	22m ²	25m ²	19m ²

CAPACITIES	ABBAY	GARRICK
THEATRE	40	10
BOARDROOM	24	8
CLASSROOM	20	6
U SHAPE	20	6
RECEPTION	40	-
DIMENSIONS		
AREA	42m ²	18m ²



Abbey Suite
Area: 42m² | Capacity: 24

Where to find us



1. The Alexander Hotel
2. The Davenport Hotel
3. The Mont Clare Hotel
4. The Stephen's Green Hotel

Dublin at a Glance

- City centre locations on the corner of Stephen's Green and just off Merrion Square.
- Located adjacent to the IFSC, Convention Centre Dublin and Docklands, the capital's key business and finance districts.
- Less than 25 minutes from Dublin Airport.
- All within a two minute walking distance of College Green, Trinity College and Grafton Street.
- Perfectly positioned to explore the National Museum, the National Gallery and Government Buildings to name a few attractions.
- Within a ten minute walk to some of Dublin's key entertainment and sporting venues, including Aviva Stadium, The 3 Arena and Bord Gáis Theatre.

Meeting Rooms & Event Spaces

Our meeting and event spaces are varied in style in each of the hotels. All rooms boast natural daylight. With capacities ranging from 10–400 delegates, all our rooms are kitted out to the highest specifications, so that you can work efficiently and smarter. We can take care of all your AV and technical requirements no matter how big or small.

O'Callaghan Hotels

Dublin | Gibraltar | Annapolis | Tamburlaine Cambridge Opening 2017
Hospitality House | 16-20 South Cumberland St | Dublin 2 | Ireland
+353 [0]1 6073900 | events.dublin@ocallaghanhotels.com